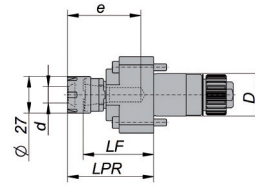


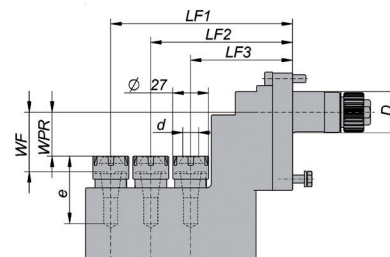
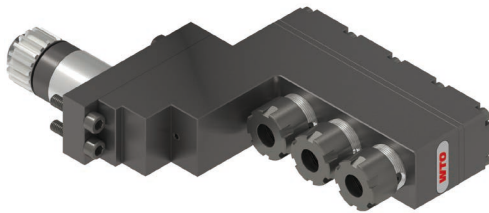
侧面钻铣动力刀座



型号	机床接口			刀具接口	尺寸/技术资料						
	D	机床	驱动		d	LPR	LF	e	n max. [rpm]	M [Nm]	i n1:n2
NF16-DNE-CT31A-063-E-A	31	Cincom A20 Cincom L20	直齿	ER-16NF	0,5-10	63,5	52	54	8000	13	1:1

尺寸单位为mm. 包含锁紧螺帽和堵头螺丝ER-16NF

3轴端面钻铣动力刀座



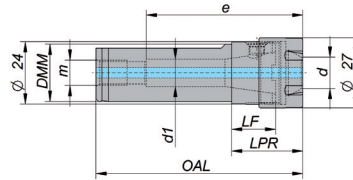
型号	机床接口			刀具接口	尺寸/技术资料									
	D	机床	驱动		d	LF1	LF2	LF3	WPR	WF	e	n max. [rpm]	M [Nm]	i n1:n2
NF16-DNI-CT31A-076-E-X3-A	31	Cincom A20 Cincom L20	直齿	ER-16NF	0,5-10	136,5	106,5	76,5	33	44,5	50,5	8000	6	1:1




尺寸单位为mm. 包含锁紧螺帽和堵头螺丝ER-16NF

圆柱形刀柄

有圆柱柄及平面

灵活应用ER筒夹和nanoFlex® 适配器到镗刀座和套筒刀座



规格	型号	DMM	d min.	d max.	LF	LPR	OAL	d ₁	m	e			
ER-16NF	NF16-SSH-075-A	3/4"	0,5	10	17	28,5	78,5	10,5	G1/8"	60,5	NF16-SCN-A	107520005	NF16-SPL-A

尺寸单位为mm. 包含锁紧螺帽和堵头螺丝ER-16NF

启动套装

NF16-DNE-CT31A-063-E-SK-A

包含:

- 1 NF16-DNE-CT31A-063-E-A 侧面钻铣动力刀座
- 1 NF16-SAD-ER11-A 筒夹适配器ER11M
- 1 NF16-SDR-A 驱动环 (包含NF16锁紧螺丝)
- 1 NF16-STW-A 扭矩螺丝刀
- 1 107516002 扳手SW19
- 1 107520005 扳手ER-16NF
- 1 107511005 扳手ER11M

